

— Move-In Ready —

1901 ROXBOROUGH ROAD - FULL TOP FLOOR

20,000 SF with Building Signage Opportunity



Two-Story Lobby

HIGHLIGHTS

- Rare top floor opportunity in SouthPark with panoramic views
- Across from the new AC Marriott Hotel with rooftop bar, Specialty Shops including unparalleled dining, and SouthPark Mall
- Boutique building on the more accessible side of SouthPark
- State of the art, modern build-out
- Connected covered parking deck



Furniture Negotiable

Walk to
150+ RESTAURANTS & RETAILERS



spectrumcos.com

Ted Lee

704 281 6978

tedlee@spectrumcos.com

Dillard Williams

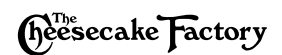
704 770 7049

dwilliams@spectrumcos.com

1901 ROXBOROUGH ROAD - FULL TOP FLOOR



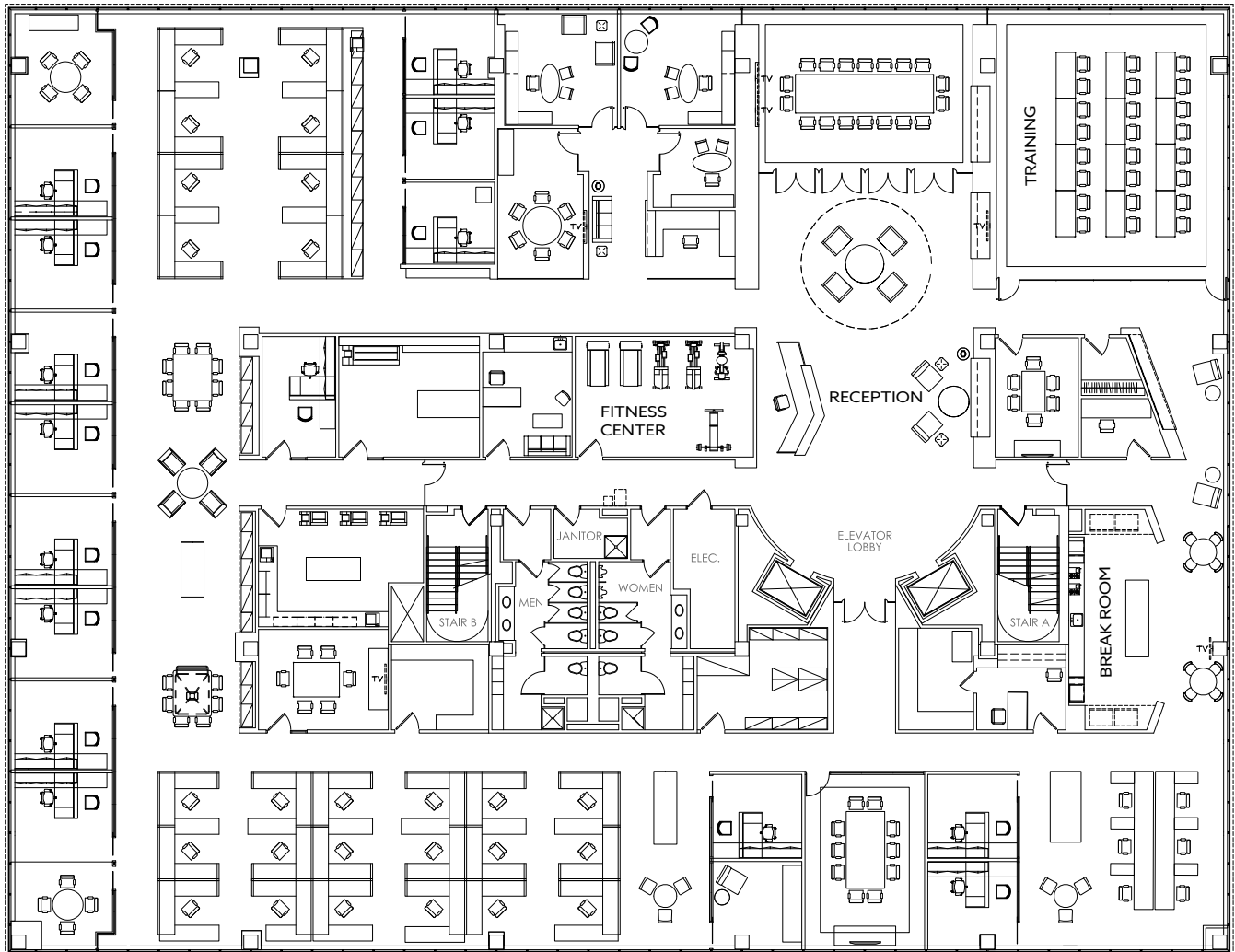
RESTAURANTS



Baku • BrickTop's • Capishe • Lil Mama's • Paco's Tacos • Rooster's • Toscana • Village Tavern

1901 ROXBOROUGH ROAD - FULL TOP FLOOR

20,000 SF with Building Signage Opportunity



**MOVE-IN
READY**

23 Private Offices | Glass Lines

7 Conference Rooms

32 Workstations

Collaborative Areas Throughout

Private Fitness Center



spectrumcos.com

Ted Lee

704 281 6978

tedlee@spectrumcos.com

Dillard Williams

704 770 7049

dwilliams@spectrumcos.com